

LASHING RING - "WELD-ON"

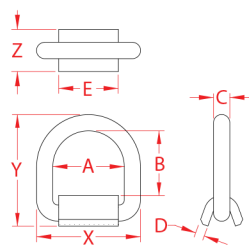
316 STAINLESS STEEL



Import



Drop Forged



ITEM	A	B	C (size)	D	E	X (height)	Y (length)	Z (width)	WLL (lb)	WT (lb)	PACKAGING TYPE	EACH (qty)	INNER (qty)	CARTON (qty)	UPC
S3722-0013	2.35"	2.05"	1/2"	0.30"	1.96"	3.43"	3.65"	1.38"	*3,000	1.00	POLYBAG	1	1	25	791506057840
S3722-0016	2.94"	2.55"	5/8"	0.38"	2.56"	4.30"	4.48"	1.75"	*4,500	2.18	POLYBAG	1	1	20	791506057857
S3722-0020	2.98"	2.58"	3/4"	0.38"	2.56"	4.47"	4.63"	1.89"	*6,500	2.53	POLYBAG	1	1	10	791506057864
S3722-0025	3.00"	2.52"	1"	0.52"	2.56"	5.00"	5.14"	2.14"	*8,500	4.47	POLYBAG	1	1	5	791506057871

NOTE:

HEAVY DUTY LASHING RING IS DESIGNED FOR DEMANDING TIE-DOWN APPLICATIONS. "D" RING IS FORGED 316 STAINLESS STEEL AND FOLDS FLUSH WHEN NOT IN USE. FEATURES WELD-ON MOUNTING PLATE. IDEAL FOR CARGO APPLICATIONS SUCH AS OVERSEAS CONTAINER SHIPMENTS OR LONG DISTANCE HAULING IN EXPOSED ELEMENTS.

***WORKING LOAD LIMIT DEPENDS ON THE QUALITY OF THE WELD ATTACHING THE BASE.**

ALL DIMENSIONS ARE NOMINAL (+/- 3%) AND ARE SUBJECT TO CHANGE WITHOUT NOTICE.